



# Proficy Maintenance Gateway

Enabling you to continuously improve your plant reliability

## Benefits

- Reduced equipment failure rates and unplanned downtime
- Improved first pass quality and reduced waste
- Reduced turnaround time for repairs and planned maintenance costs
- Ability to uncover additional capacity due to the continuous improvement in reliability
- Ability to track reliability plans with rules and aggregators, including total uptimes or availability of individual equipment over a period of time
- Increased analysis into next stage of reliability due to the rule builder, which can be used to introduce or refine rules that implement RCM strategies

Proficy\* Maintenance Gateway (PMG) enhances the Proficy software suite—a platform for driving reliable, profitable operations in a plant and across an enterprise—by enabling you to integrate maintenance operations in your operational excellence journey. PMG can scale up from a simple condition-monitoring system to a sophisticated orchestration engine for seamlessly implementing Reliability Centered Maintenance (RCM) strategies.

The latest release of PMG extends its proven capabilities with a new meter reading module, enhanced write-back functions, and new adaptors to Enterprise Asset Maintenance (EAM) applications such as SAP's Plant Maintenance (PM) module. The broad range of connectivity options, ease-of-use, and scalability make PMG desirable to companies in asset-intensive industries—from utilities to facilities management.

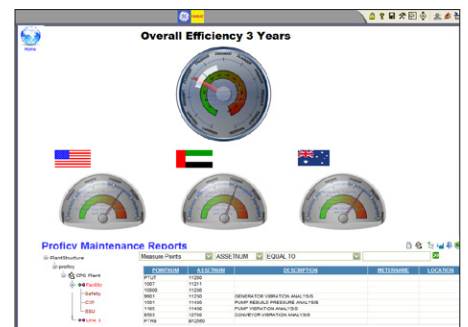
By synchronizing the workflows of the production and maintenance systems, PMG helps you improve the efficiency of your operations by enabling you to:

- Drive EAM systems to generate proactive, predictive maintenance on critical equipment based on real-time conditions to eliminate unplanned downtimes during production.
- Track usage of equipment to drive EAM to generate preventive maintenance that will ensure appropriate maintenance, as opposed to costly over- or under-maintenance.

- Track the type/frequency of occurrence of failures that will enable EAM in root cause identification of such failures.
- Track the time to repair, which takes away from productive time.
- Continuously optimize usage-based PMs based on real-time plant dynamics to minimize cost.

PMG works in the reverse direction as well—from EAM to production—enabling you to:

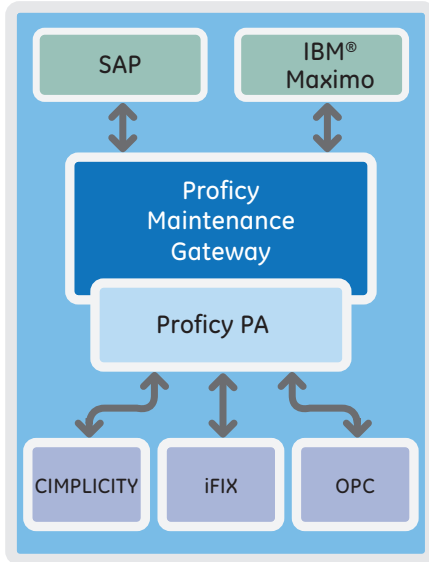
- Monitor/track the real-time status of an ongoing maintenance activity in an EAM, specifically, from a production perspective, using a web portal.
- Generate triggers/alerts in the production systems when changes happen in the EAM systems.
- Continuously contribute to RCM by implementing Preventive, Predictive, Corrective and Emergency work orders for the various assets under different real-time conditions.



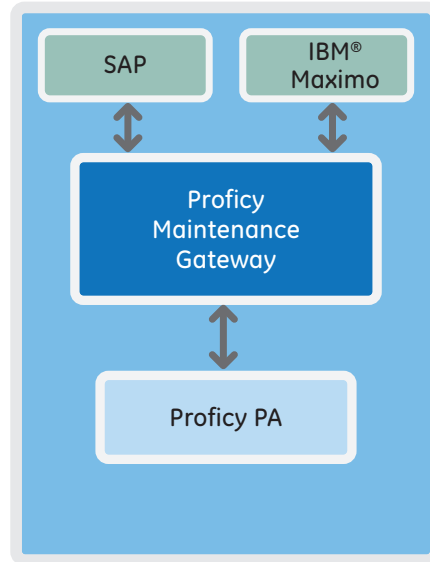
**PMG Portal View:** Example view showing a set of maintenance reports and equipment details that reside in the EAM system, which can be viewed in real time in the Proficy Portal.



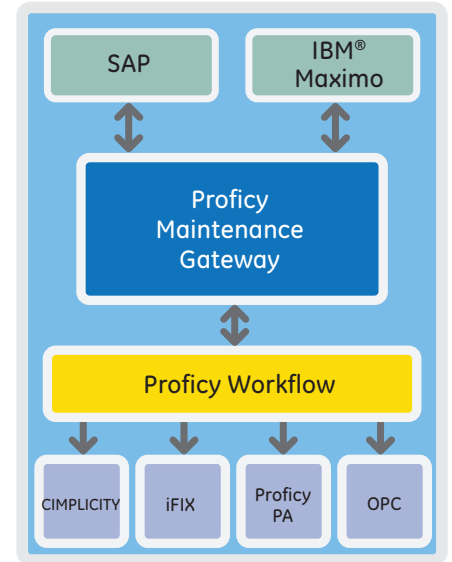
# Proficy Maintenance Gateway



Option 1



Option 2



Option 3

**How does PMG fit in the Proficy Suite?** There are several options to help you integrate PMG into your existing Proficy\* suite of solutions. Option 1 is for existing Proficy HMI/SCADA – CIMPLICITY\* and iFIX\* users, Option 2 is for Proficy Plant Applications users, and Option 3 is for Proficy Workflow users. In Option 3, PMG extends the Proficy Workflow into the enterprise – into SAP and Maximo applications.

## The PMG Plant Connection

Proficy Maintenance Gateway has built-in standard connections to production applications in the shop floor. It seamlessly connects to the plant in any of the following ways:

- Proficy Plant Applications
- Proficy HMI/SCADA - CIMPLICITY or iFIX
- Proficy Historian
- Proficy Workflow
- Any other OPC-compliant MES, SCADA, PLC, Historian

## The PMG Enterprise Connection

Proficy Maintenance Gateway has standard interfaces to SAP or Maximo via the following enterprise adaptors for different versions of these applications:

- PMG SAP 4.6C Adaptor
- PMG IBM Maximo 7.1 Adaptor
- PMG IBM Maximo 6.2 Adaptor
- PMG IBM Maximo 5.2 Adaptor

These adaptors provide a direct connection to the workflow processes in these EAM applications so that proactive RCM actions can be generated in these systems in response to events occurring in the plant in real time.

Additionally, PMG can connect to any homegrown EAM system via standard XML interfaces.

## GE Fanuc Intelligent Platforms Information Centers

Headquarters:

1 800 GE FANUC  
1 800 322 3616  
1 434 978 5100

Global Regional phone numbers are available on our website at [www.gefanuc.com](http://www.gefanuc.com)

©2009 GE Fanuc Intelligent Platforms, Inc. All rights reserved. All other brands or names are property of their respective holders. Specifications are subject to change without notice.

## Additional Resources

For more information, please visit the GE Fanuc Intelligent Platforms web site at:

[www.gefanuc.com](http://www.gefanuc.com)

