



# Proficy\* HMI/SCADA – iFIX\* WebSpace

Full Featured HMI/SCADA over the Web

## Advantages

- Full-featured HMI/SCADA on the Web
- Zero client configuration
- One-time SCADA configuration
- No restrictions on secure containment of third party controls
- External access over the internet from anywhere.
- No third party software required

## Delivering Connectivity That Drives Results

iFIX WebSpace from GE Fanuc Intelligent Platforms is an easy-to-use, full-featured web client that enables you to extend, expand and enhance your new or existing HMI/SCADA iFIX system.

It enables full control and visualization capabilities over your company intranet or secure internet without the need to change or alter the iFIX application, and can be set up within minutes.

With iFIX WebSpace, you can reduce costs, improve time to action, and expand analytic capability—driving sustainable advantages across all levels of your business, including management, operators, engineering and IT levels.

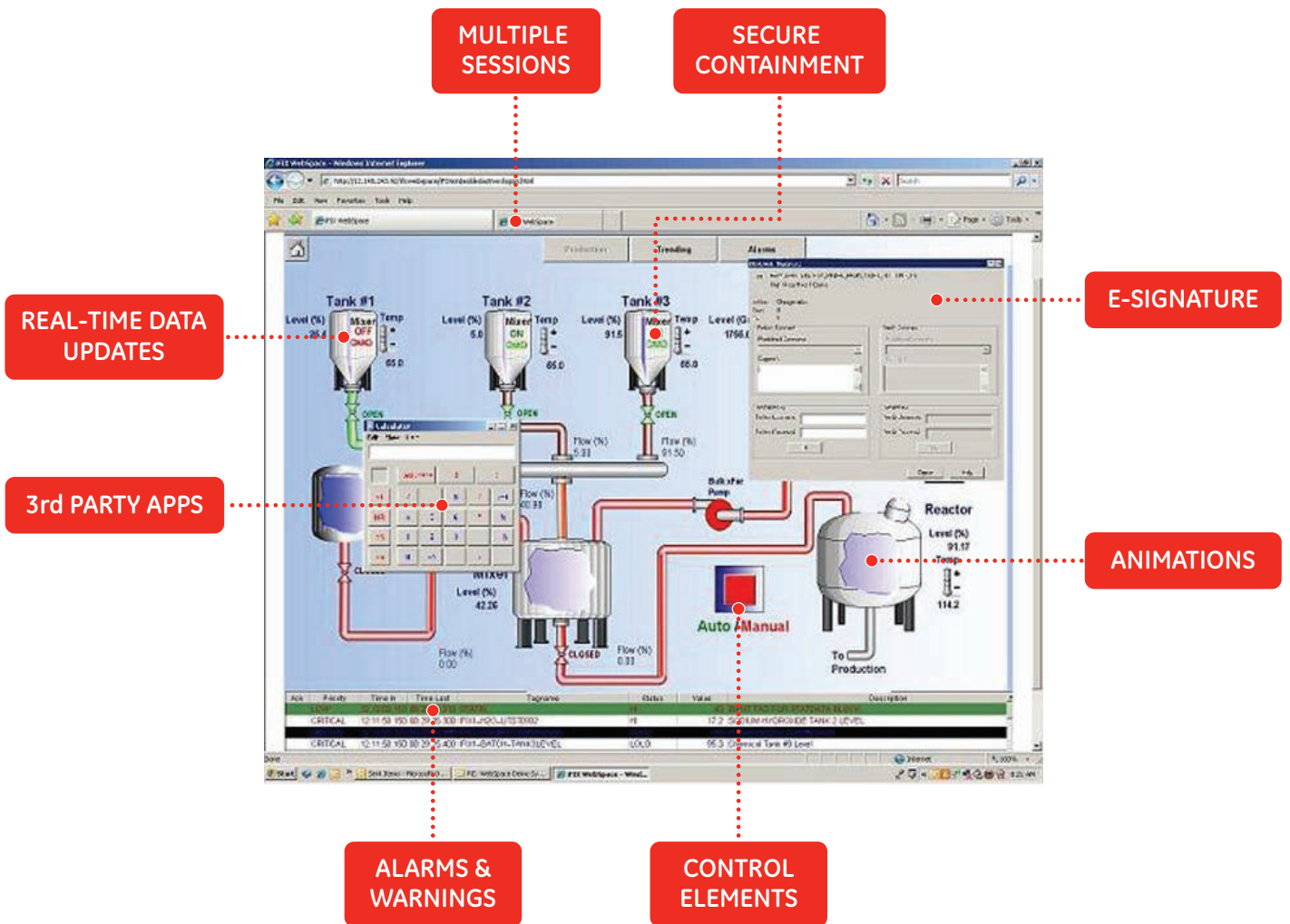
**Easy to Extend** - iFIX WebSpace extends your iFIX application viewing and control abilities right into a web browser without compromising features, graphics or functionality.

**Easy to Expand** - With support for up to 25 simultaneous clients, WebSpace enables your new and existing iFIX systems to be dynamically expanded across the facility or the globe.

**Easy to Enhance** - iFIX WebSpace enhances your users' system experience by enabling them to run multiple iFIX WebSpace clients and view many systems from one point.



## Full featured HMI/SCADA over the Web



### Full featured HMI/SCADA over the Web

iFIX WebSpace extends your iFIX application viewing and control abilities right into a web browser. WebSpace doesn't compromise features, graphics, or functionality for that it has been designed as a full-featured iFIX client and delivers full application functionality into Internet Explorer or Firefox.

#### What is full featured?

**Real Time Data Updates** The client is updated on change direct from the SCADA, so the user can react in real-time.

**Multiple Sessions** Support for multi-tab browsers.

**Secure Containment** WebSpace accommodates third party controls with the same ease as iFIX Workspace

**e-signature** e-signature enhanced security and audit trail through the web.

**Animations** WebSpace supports iFIX displays with animations.

**Control Elements** All control elements are operable in WebSpace and inherit the iFIX applications security setup.

**Alarms and Warnings** View, ack and silence just like a thick client.

**Third Party Apps** WebSpace launches third party apps triggered from within your iFIX application.

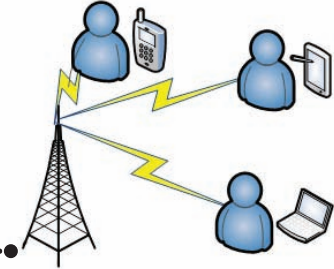
# Typical iFIX WebSpace applications

## Single Point Connection



- Quick and easy system adjustment to fluctuating resources
- Increased flexibility to dynamically adjust control points on the fly
- Increased adaptability to view multiple systems simultaneously

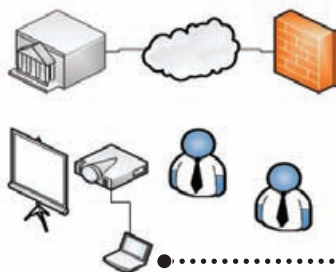
## Mobilization



- Improve time to action
- Reduce total cost of ownership
- Enable remote access for debug and support

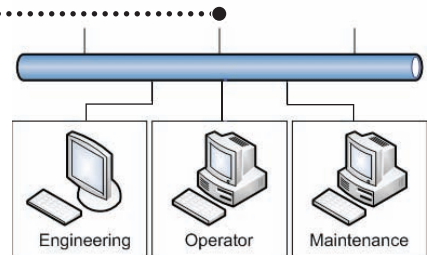
## WebSpace

## Information Viewing



- Manage with real data
- Improve analytical and planning abilities
- Improve time to decision

## Web SCADA



- Simple control and monitoring applications
- 100% web-based client solutions
- Flexible client connections and licensing

Positively impact your operations with iFIX WebSpace and drive results today

# With iFIX WebSpace—you are in control

### WebSpace Flexibility

iFIX WebSpace has many flexible configuration topologies and can be installed on an independent dedicated server or on the main iFIX server.

- **Dedicated Server(s)** – This setup is typically used when a large amount of clients are expected, allowing for WebSpace to utilize the entire power of the server in order to serve the connected clients.
- **iFIX and WebSpace Server** – In the event of sporadic or a lower volume of simultaneous connected clients, iFIX WebSpace can be installed directly on the same hardware as the iFIX SCADA server.

### WebSpace iFIX Version Support

The power of iFIX WebSpace can be extended for a wide variety of iFIX versions. WebSpace has native support for iFIX 5.0 systems and has the ability to web enable previous and legacy versions—from iFIX 4.5 back to version 2.6 and including iFIX 7.0.

### WebSpace Admin

Administer your system via the dedicated WebSpace admin application, which provides the following key tools for managing your system and its connections.

- Client Disconnect
- Client Session Shadowing
- SSL 56 or 128 bit Encryption
- Port Selection
- Maximum Client Limit

### System Requirements

#### Server:

- iFIX 5.0 SP2 SCADA Server
- iFIX 7.0, iFIX 2.x to 5.0 Project
- Apache HTTP Server 2.2.10 or later OR Microsoft Internet Information Server 5.1 or 6.0
- Microsoft® Windows® XP Pro or Server 2003

#### Clients:

- Microsoft Internet Explorer 7.0
- Mozilla Firefox 3.0 or greater
- Microsoft® Windows® XP Pro, Server 2003 or Vista

For more information visit [www.gefanuc.com/webpace](http://www.gefanuc.com/webpace)

### About GE Fanuc Intelligent Platforms

GE Fanuc Intelligent Platforms, a joint venture between General Electric Company (NYSE: GE) and FANUC LTD of Japan, is an experienced high-performance technology company and a global provider of hardware, software, services, and expertise in automation and embedded computing. We offer a unique foundation of agile, advanced and ultra-reliable technology that provides customers a sustainable advantage in the industries they serve, including energy, water, consumer packaged goods, government and defense, and telecommunications. GE Fanuc Intelligent Platforms is a worldwide company headquartered in Charlottesville, VA and is part of GE Enterprise Solutions. For more information, visit [www.gefanuc.com](http://www.gefanuc.com).

### GE Fanuc Intelligent Platforms Information Centers

Headquarters:  
1 800 GEFANUC  
1 800 322 3616  
1 434 978 5100

Global Regional phone numbers are available on our web site [www.gefanuc.com](http://www.gefanuc.com)

### Additional Resources

For more information, please visit the GE Fanuc Intelligent Platforms web site at:

[www.gefanuc.com](http://www.gefanuc.com)

